

# G.M. Advanced Fencing & Security Technologies Ltd



**G.M. Advanced Fencing & Security Technologies Ltd**

14 Taas St. P.O. Box 2327 Industrial Area Kfar Saba 44425 Israel

Tel: 972-9-7662965 Fax: 972-9-7662964

E-mail: [info@gmsecurity.com](mailto:info@gmsecurity.com) Website: [www.gmsecurity.com](http://www.gmsecurity.com)

## SecurCOMM Installation Manual

The SECURCOMM Installation Manual describes the installation of the SECURCOMM and related software applications required to operate the SecurCOMM Control Center Software Application.

Please note the following:

1. The SecurCOMM Control Center Software Application upgrades and replaces previous central control system software supplied by GM Advanced Fencing & Security Technologies (GM).
2. The SecurCOMM User's Guide will be supplied in a separate document.
3. Please follow the step-by-step installation process described below. Please contact GM's technical support for any technical support or any further information that may be required.

### STEP-BY-STEP INSTALLATION GUIDE

You are required to install 3 applications:

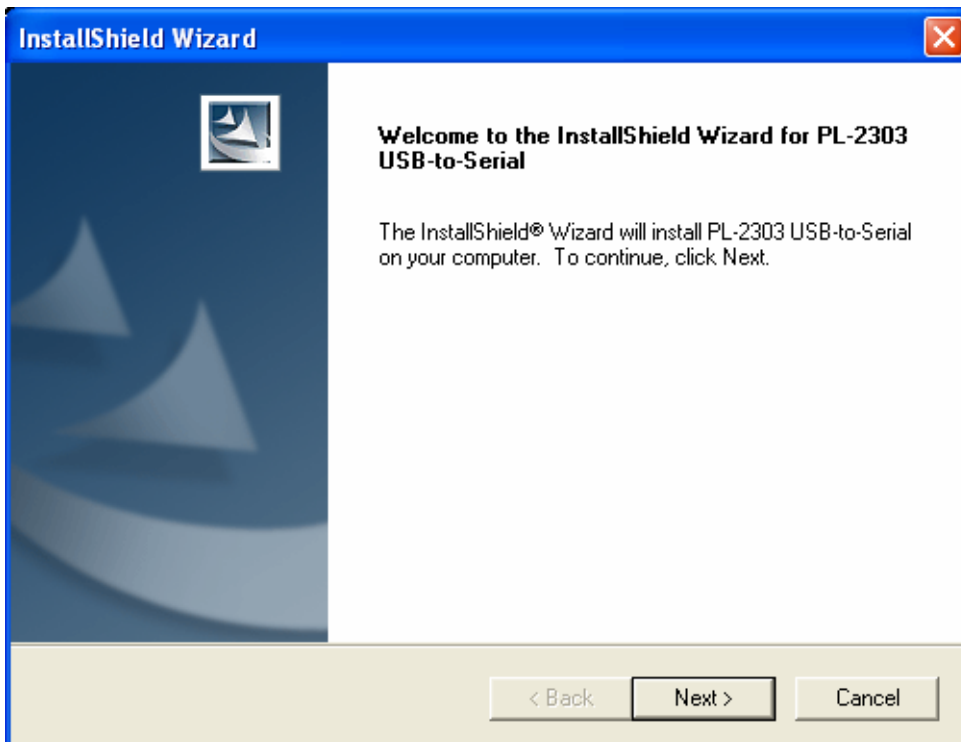
1. Install the USB to Serial Port driver for either Windows XP or for Windows Vista (Choose either option 2 or 3 below). The USB driver comes with a USB cable with a RS 232 plug.
2. Install the HASP Driver. The installation of this driver enables the use of the HASP plugs provided with each software application. The software application will not open or will close if the HASP plugs are removed from the USB port of the computer.
3. After installing the USB driver and HASP driver, you are now able to install the SecurCOMM application:

Insert the Software Application into the computers CD drive and wait for the following window to open:



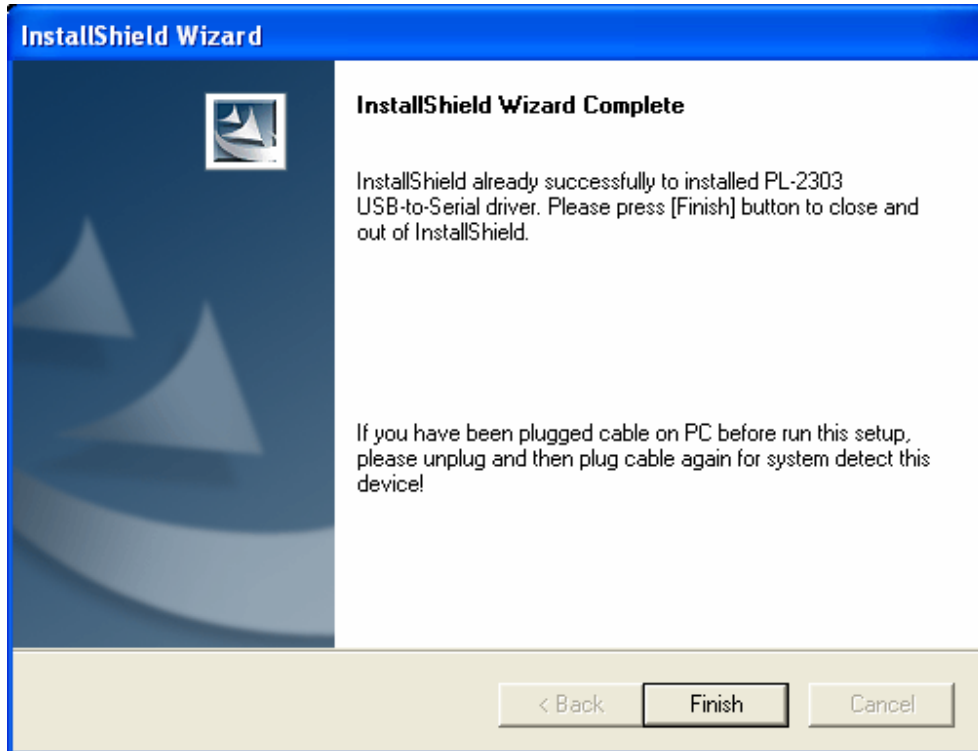
Choose either OPTION (2) OR (3) to install the USB driver depending on the computer's XP or Vista operating system.

The following window will open:



CLICK **NEXT**

The InstallShield Wizard will automatically install the PL-2303 USB to serial driver.



Click **FINISH**

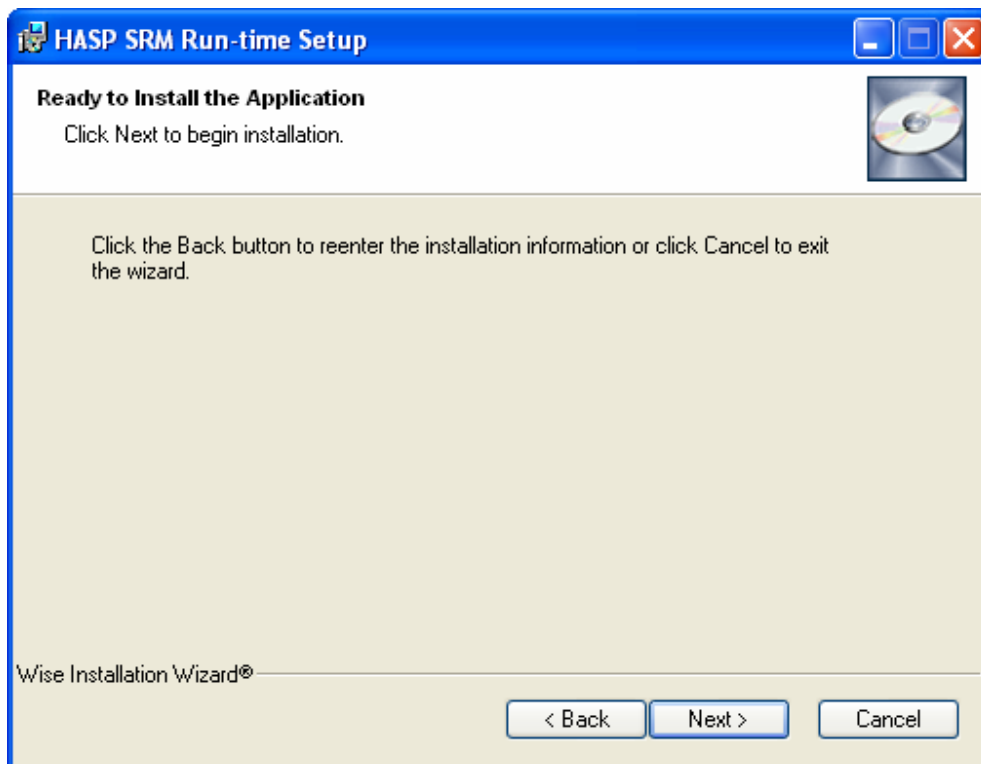
Open the start window again and choose the INSTALL HASP DRIVER OPTION (4).



The following windows will open:

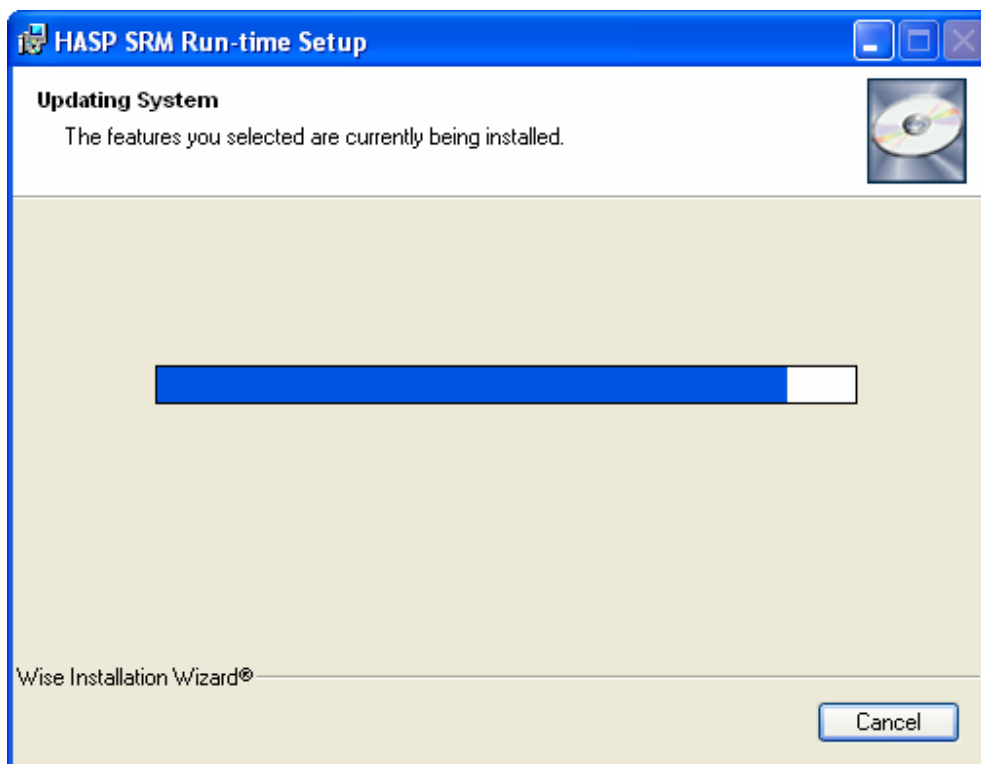


Click **NEXT**



Click **NEXT**

The following window will open. Wait until the installation is completed.



When the installation is complete the following window will open:

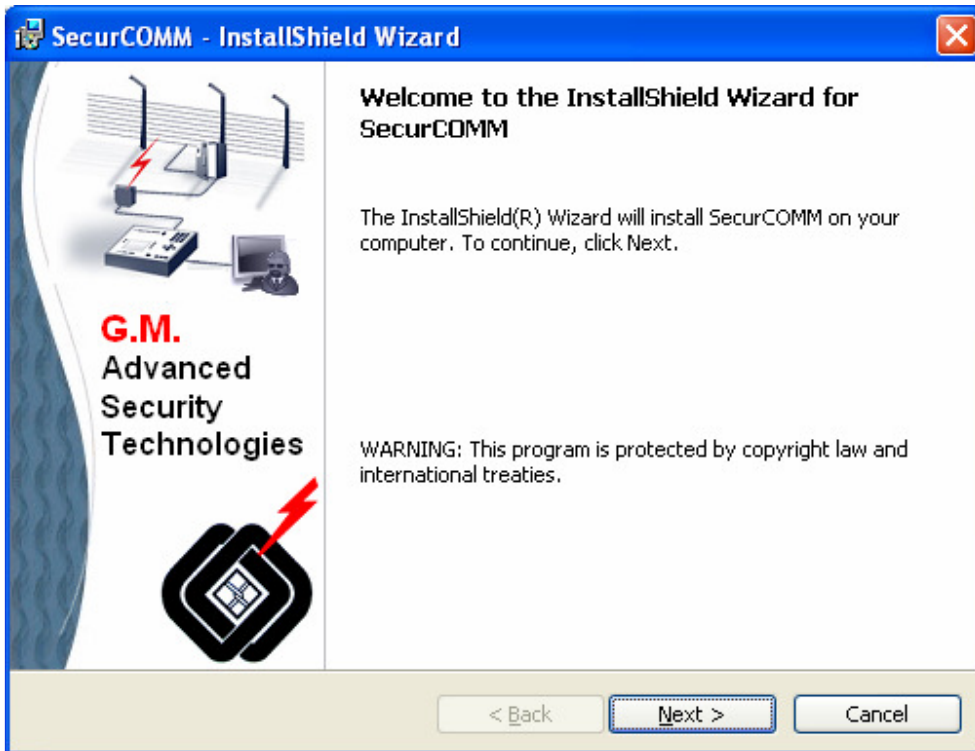


Click **FINISH**

Open the start window again and choose the INSTALL SecurCOMM Application OPTION (5).

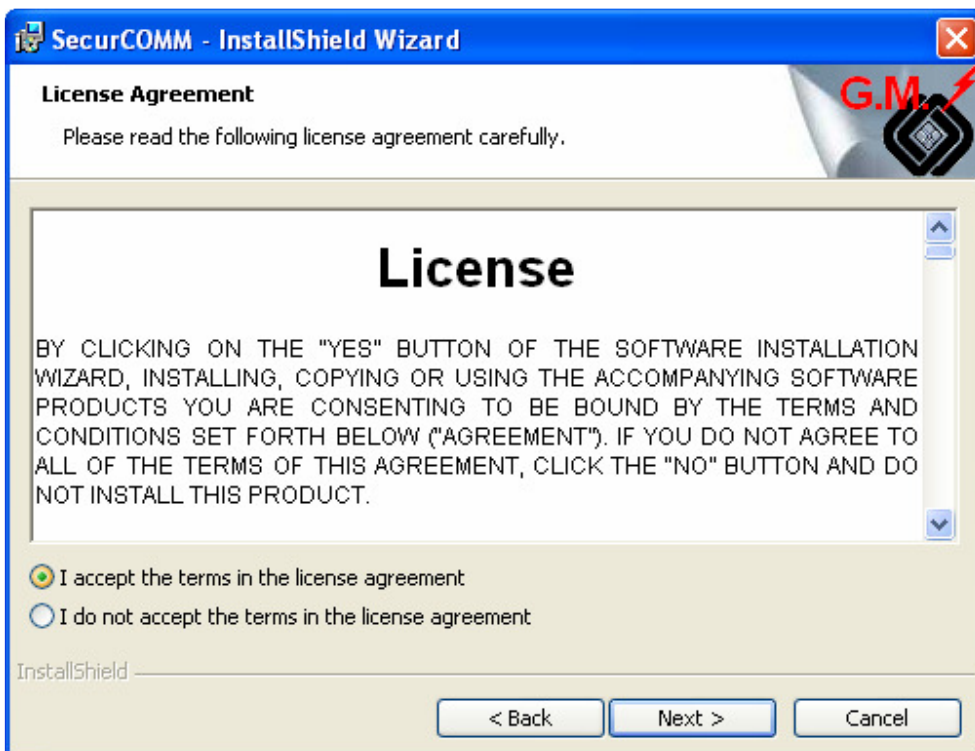


The following window will open.

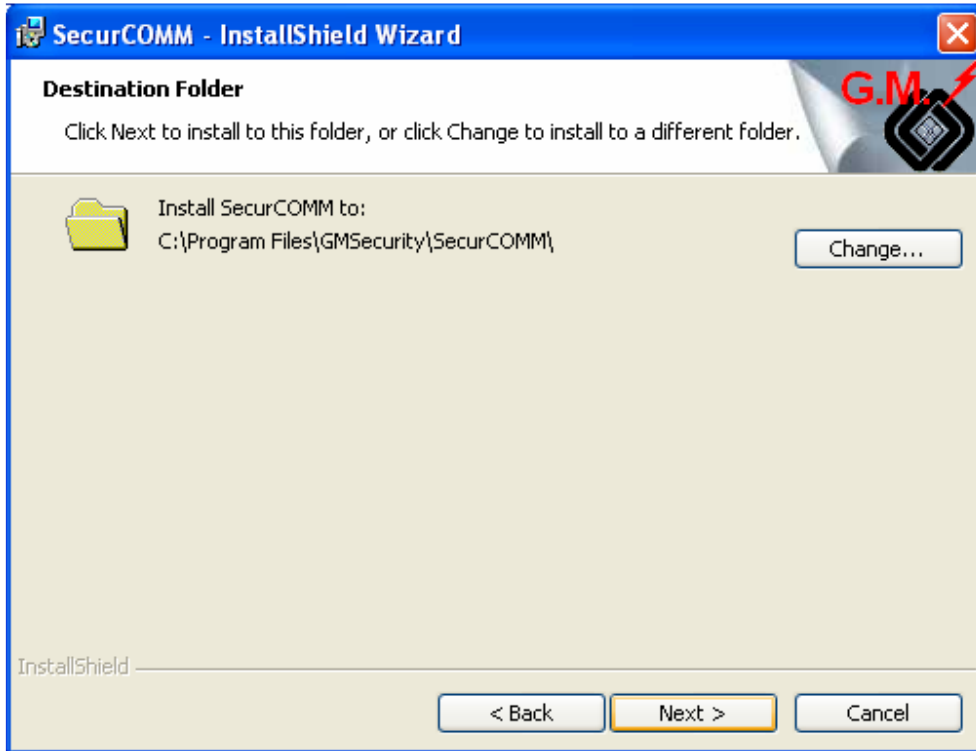


Click **NEXT**

The following window will open. Mark the "I ACCEPT" option and then click **NEXT**

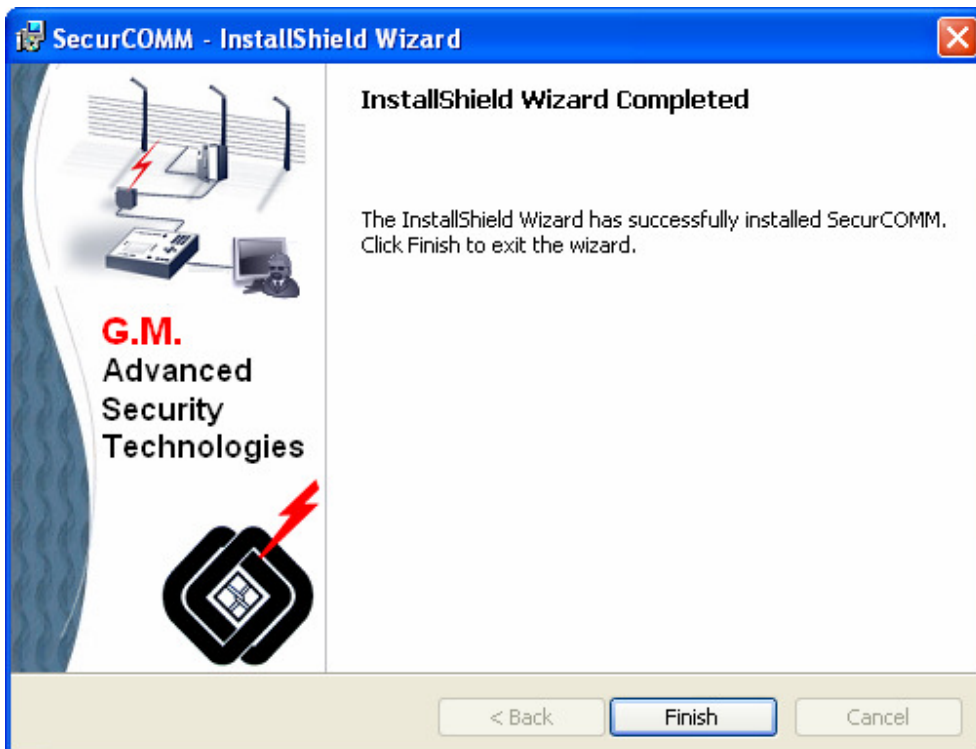


Click **NEXT** to install to the **GMSecurity\SecurCOMM** Folder in **PROGRAM FILES** or save in a different folder using the **CHANGE** button in the following window.



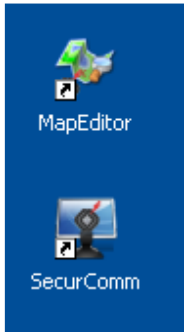
Click **NEXT**.

The application will be installed automatically and the following window will appear.



Click **FINISH**

You have now completed the installation of the software. Shortcuts to the SecurCOMM and MapEditor applications will be automatically installed on your desktop.

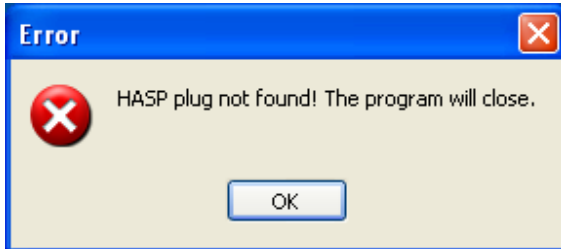


Open the start window again and click **EXIT** to exit the start window.



You are now able to open the SecurCOMM Application by double-clicking on the SecurCOMM shortcut.

Please note that if you do not insert the HASP plug into the computer's USB port, the application will not open and the following window will appear.



**PLEASE NOTE:**

The first time a HASP Plug is used with the computer, the computer will advise that new hardware has been found and the HASP plug will be installed automatically.

The use of the SecurCOMM applications, especially the use of the Server and Client applications in integrated project applications requires training.

As advised previously the SecurCOMM User's Guide will be supplied in a separate document at the commencement of training.