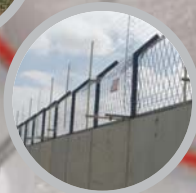


PERIMETER SECURITY SYSTEMS

Perimeter Security Perfected



G.M. ADVANCED FENCING & SECURITY TECHNOLOGIES LTD

Company Profile

GM specializes in the development and manufacture of integrated PERIMETER SECURITY INTRUSION DETECTION SYSTEMS, providing state-of-the art solutions to the security needs of the customer. GM is an electronics system house providing perimeter security solutions for a wide range of applications requiring reliable and cost-effective security systems.

Perimeter Security Intrusion Detection Systems

- ▶ ADT Electric Security Fencing System
- ▶ V-Alert Intrusion Detection System
- ▶ DUAL COMM Communication and Central Monitoring System Software.
- ▶ Integrated Perimeter Security Systems supplied on a Turnkey Project Basis.

Technology

GM is continually updating their technology to meet the needs of increasingly sophisticated intruders, specific site requirements and harsh geographical and climatic conditions on site, and at the same time taking into consideration the end-users budgetary constraints.

All GM's electronic microprocessor controlled systems are ADAPTIVE and DIGITALLY controlled systems which are unaffected by changes environmental conditions.

GM's technology facilitates installation and requires a minimum amount of post-installation maintenance procedures.

Applications

GM's systems provide cost effective security solutions for a wide range of high and medium security applications:

- ▶ Airports, Industrial Complexes, Military and Government factories and facilities.
- ▶ Atomic Energy and Power Stations, Gas and Oil Pipelines, Water Board installations
- ▶ Telecommunication Antenna Sites, Bonded Warehouses.
- ▶ Commercial properties, warehouses and private houses.

Turnkey Projects

GM supplies and installs turnkey projects in the field of perimeter security fencing projects. This includes the integration of indoor and outdoor detection systems, CCTV and access control systems.

GM provides technical support to distributors and system integrators installing turnkey security projects worldwide.

Export Markets - Business Partner Profile

GM is actively looking to expand their export markets by looking for distributors and business partners in the following fields:

- ▶ System Integrators specializing in Outdoor Alarm Systems.
- ▶ Fencing Contractors supplying and installing electronic systems.
- ▶ Alarm product distributors and installers providing technical back up and after-sales technical support.
- ▶ Companies already selling other Perimeter Security Products and Systems.

14 Taas St. P.O.Box 2327 Kfar-Saba, 44425 Israel Tel: 972-9-7662965, Fax: 972-9-7662964

info@gmsecurity.com ■ www.gmsecurity.com



G.M. ADVANCED FENCING & SECURITY TECHNOLOGIES LTD

GM's Technological Advantages

ADT ELECTRIC SECURITY FENCING SYSTEM

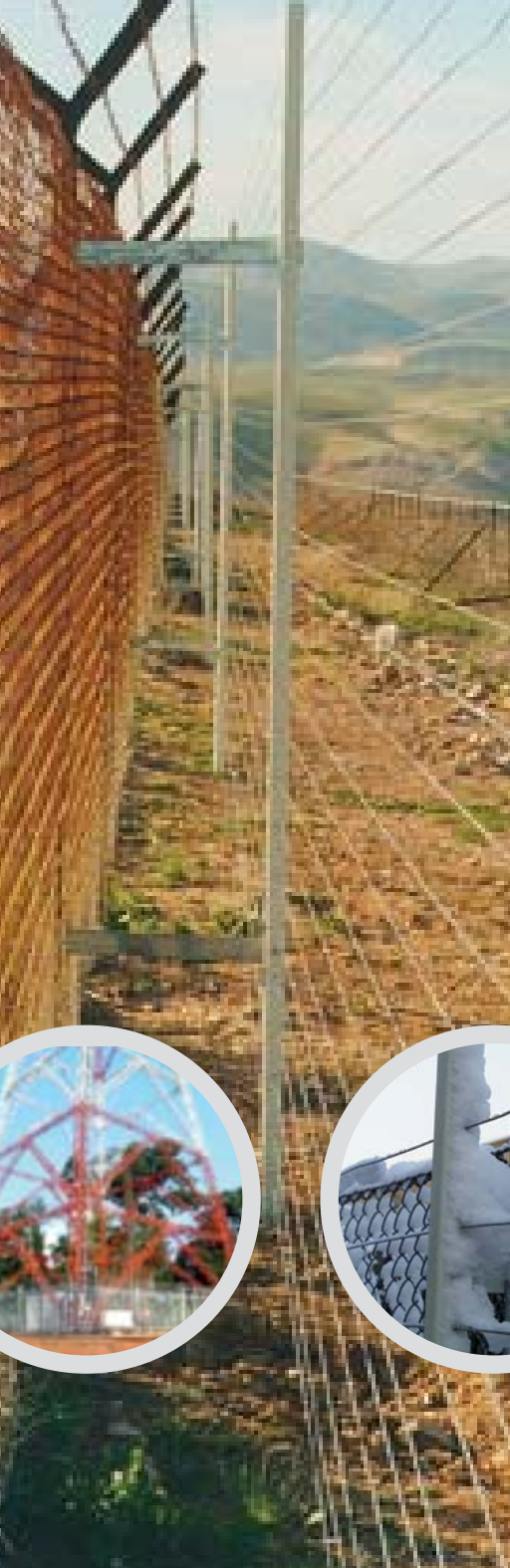
GM TECHNOLOGIES	OTHER AVAILABLE SYSTEMS
Microprocessor digital technology	Analog technology
Adaptive The technology enables the system to ADAPT automatically to changing environmental conditions and changing conditions on the site. The adaptive threshold is not constant, changing according to field conditions such as changes in moisture levels, dust etc in order to maintain the highest alarm detection capability.	Fixed parameters The operating parameters are preset, and can only be changed manually. There is no response to any changes in the conditions existing on site, resulting in a high false alarm rate. The system has to be set at the lowest alarm threshold, or the setting of lowest sensitivity in order to prevent continuous false alarms.
Programmable The system can be pre-programmed to meet specific site conditions. Any changes required are undertaken by changing the parameters of the microprocessor.	Fixed settings The system has a limited number of settings, changes to which require physical changes to the electronic printed circuit boards.
False Alarm Rate Negligible due to the adaptive threshold technology. The units RESPOND to changing field conditions.	False Alarm Rate False alarms occur as a result of the unit being unable to respond to changing field conditions.
Less Periodic Maintenance The adaptive threshold capability reduces the amount of periodic maintenance required on the fence.	More Periodic Maintenance The fence will react immediately to any nuisance alarms caused by factors such as vegetation overgrowth, resulting in immediate maintenance procedures.

V-ALERT INTRUSION DETECTION SYSTEM

ADVANTAGE	GM'S V-ALERT SYSTEM	OTHER AVAILABLE SYSTEMS
NO MOVING PARTS	Purely electronic sensor with electronic components that detect movement. No reliance on mechanical movement of sensor parts to detect an intrusion.	Systems rely on a mechanical-inertial sensor with moveable parts to generate an alarm.
3 METER DETECTION RESOLUTION	EACH sensor has unique digital ID providing alarm detection capability from each independent sensor.	There is no independent data received from individual sensors. Detection capability from large group of sensors only
ADAPTIVE DIGITAL TECHNOLOGY AND LOW FALSE ALARM RATE	Constant flow and comparison of data from each sensor enables the system to ADAPT continuously to changes in environmental conditions and results in an extremely low false alarm rate.	Unable to maintain reliable sensor detection capability in adverse weather conditions, resulting in a high false alarm rate or unreliable detection capability.
VERSATILE / SAME SENSOR, DIFFERENT APPLICATION	Sensors can be used in a wide range of applications that include all types of fences, walls, doors, window bars.	Sensor installation limited to specific types of fences required to be in good condition.
SETTING OF SENSORS	V-Alert Application Software enables the setting of different sensitivities according to the type of barrier on which the sensor is installed. Different settings for different uses are possible within the same sensor line.	No possibility to set individual sensors.



Perimeter Security Perfected



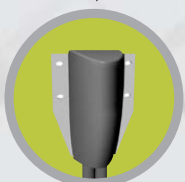
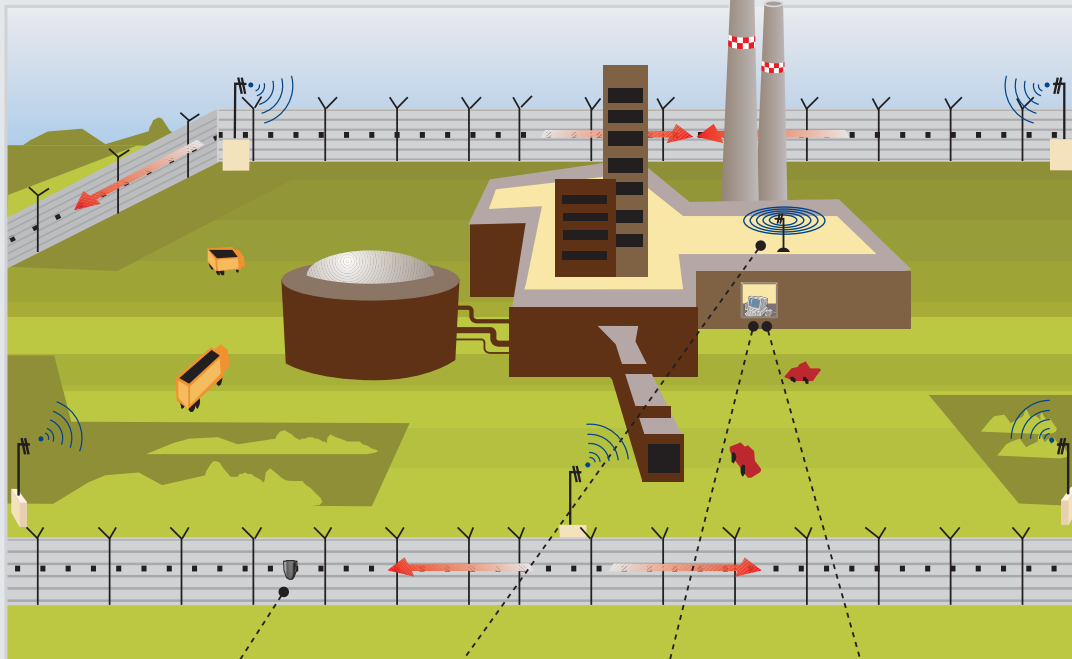
“ADT” Electric Security Fencing Systems

Electric Security Fencing System designed to psychologically and physically **deter, delay** and **detect** intrusion attempts. GM has added a new concept to Electric Security Fencing Systems - **DIGITAL**. The digitally controlled system monitors voltage levels on the electric fencing wires using GM’s Adaptive Alarm Detection Threshold Technology (ADT).

- ▶ Adaptive Digital Technology maintains continuous alarm detection on electric fence wires significantly reducing the false alarm rate.
- ▶ Electric Shock High Voltage wires provide a non-lethal electric shock to the intruder acting as a physical and psychological deterrent.
- ▶ Low Voltage detection wires replace more commonly used ground/earth wires.
- ▶ Verified Alarms - **ALL** the electric fencing wires are detection wires with separate alarm indications from High Voltage and Low Voltage wires.
- ▶ Low Voltage System alternative with PASS-Tronic Anti-Spread System - “The Electric Fence without the shock”.
- ▶ Approved by International Safety Standards.



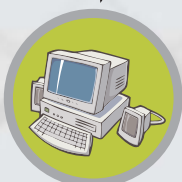
Electric Security Fencing



V-ALERT SENSOR



WIRELESS TRANSMISSION



COMPUTERIZED
CONTROL CENTER



DUALCOMM
CONTROL PANEL

DUAL COMM Communication System

The DUAL COMM system's unique feature is it's ability to simultaneously transmit WIRELESS and/or WIRED alarm signals from the DUAL COMM communication card to the user friendly, stand-alone DUAL COMM Control Panel.

- ▶ High Security - Verified alarm via wireless and hard-wired communication
- ▶ Transmission of alarm message in programmable TEXT format.
- ▶ Dual COMM Control Panel easily integrated with GM's Computer Control System Software.

GM- Integrated Security Solutions



V-ALERT *Intrusion Detection System*

Unique technology embodied in the V-Alert sensor revolutionizes existing vibration detection technology. The V-Alert's electronic components detect movements caused by any attempt at climbing or cutting the existing fence, breaking through a wall or cutting through window bars.

- ▶ No moving parts - parts do not wear out.
- ▶ 3 meter detection resolution - detection to the level of each sensor.
- ▶ Each sensor has independent electronic identity.
- ▶ Mounted on ANY Fence and Wall.
- ▶ The ability to suit a wider range of applications due to the systems technological capabilities.
- ▶ Advanced algorithm technology enables the system to detect a REAL intrusion attempt with minimum false alarm rates.

The versatility of the V-Alert system enables the installation of sensors from the SAME sensor on different type of fences, walls, roofs or burglar bars. The sensitivity and parameters of each individual sensor is programmed using GM'S proprietary V-Alert Application Software.



V-ALERT - Purely Electronics